



User Manual

March 2010

SUMMARY

OVERVIEW	3
What is D.A.S. ?	3
Main Window.....	3
Using D.A.S. for the first time.....	4
CONFIGURATION	7
Balance connected	7
Serial Port Configuration.....	8
Data Collection Mode	9
GENERAL USE	10
Button Descriptions	10
Restoring data if software stops working	11
MESSAGE LIST	12
Generic Messages	12
Main window Messages.....	12
"Scale settings" window Messages	13

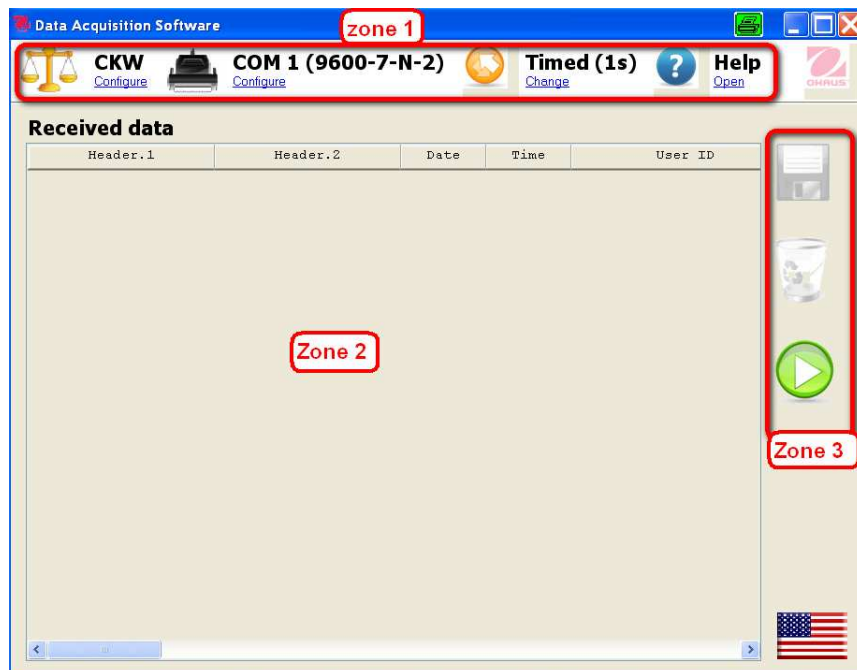
OVERVIEW

What is D.A.S. ?

D.A.S. (Data Acquisition Software) is software that collects data from selected Ohaus balances, analyzes and stores the information extracted from the balance into a table (directly exportable to Excel or CSV)

Main Window

The main window is split in 3 zones:



- Zone 1: A summary zone allowing the user to
 - Select the balance to be collected
 - Select the serial port which is used (including some communication parameters)
 - Change the data collection mode
 - “On request”: The weight is collected when the user pushes the « Print » button on the balance or the « « Send weight » » on the software
 - “Timed”: The weight is sent every x seconds (x is user-definable)
 - “Continuous” : The weight is sent continuously

-
- Access to the user manual.
 - Zone 2: A table in which data extracted from the balance is stored in real-time.
 - Zone 3: A control panel to interact with the software (Backup table, request for weight,...)

Using D.A.S. for the first time

Launch the program via the shortcut on the desktop or via the Start menu ► All Programs ► Ohaus DAS.

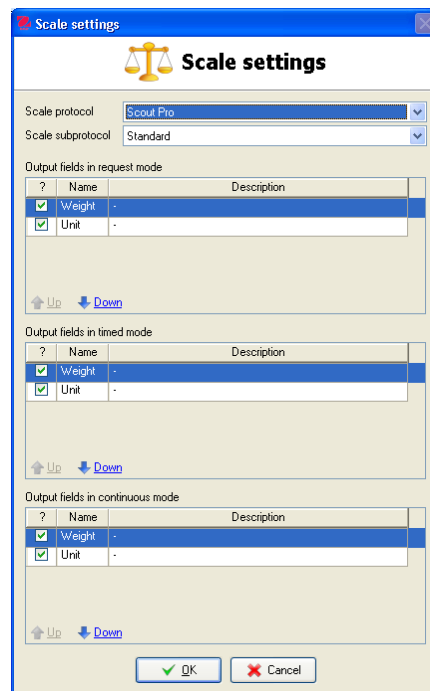
When D.A.S. is launched for the first time, the software detects that there is no balance selected and asks you to select one.



The « Scale settings » window appears. Select the proper protocol corresponding to your balance in the “Scale Protocol” list.



Some protocols are subdivided into several sub-protocols. In this case, once the protocol is selected, the list of sub-protocols is shown and you must select the sub-protocol to be used.



Once the balance protocol is selected, you can select and put in order of the fields you want to actually extract from the balance for each of the 3 modes of transmission (On request, Timed or continuous). For more details, refer to the « Configuration » paragraph.



The configuration of the balance must be EXACTLY the same as the configuration of the DAS protocol. Please refer to the “*DAS Configuration.pdf*” document

(Default : C:\Program Files\OHAUS DAS\docs\DAS Configuration.pdf)

Scale settings

Scale protocol: Adventurer Pro

Scale subprotocol: Large Housing Standard

Output fields in request mode

?	Name	Description
<input checked="" type="checkbox"/>	Date	-
<input checked="" type="checkbox"/>	Time	-
<input checked="" type="checkbox"/>	Bal ID	-
<input checked="" type="checkbox"/>	User ID	-
<input checked="" type="checkbox"/>	Proj ID	-

Up Down

Output fields in timed mode

?	Name	Description
<input checked="" type="checkbox"/>	Date	-
<input checked="" type="checkbox"/>	Time	-
<input checked="" type="checkbox"/>	Bal ID	-
<input checked="" type="checkbox"/>	User ID	-
<input checked="" type="checkbox"/>	Proj ID	-

Up Down

Output fields in continuous mode

?	Name	Description
<input checked="" type="checkbox"/>	Weight	-
<input checked="" type="checkbox"/>	Unit	-

Up Down

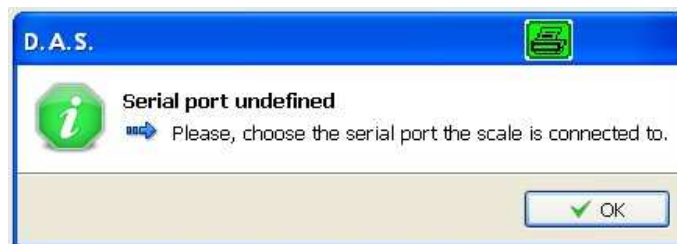
OK Cancel

Click OK to confirm your selection.

Then the software asks if you want to implement the communication parameters as per the default parameters of the selected balance.



Then, the software asks you to select the serial port to which the balance is connected.



The window for the serial port configuration appears; Select the serial port number and modify the other parameters if necessary.



Click on OK to confirm your selections.

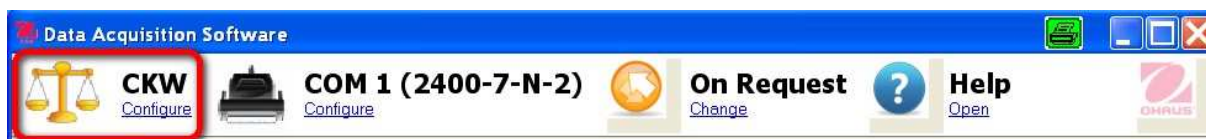
The software is ready to receive the data from the balance.

When the software is launched again, the balance and the selected serial port settings are automatically reloaded with the same parameters. It will not be necessary to re-enter all parameters

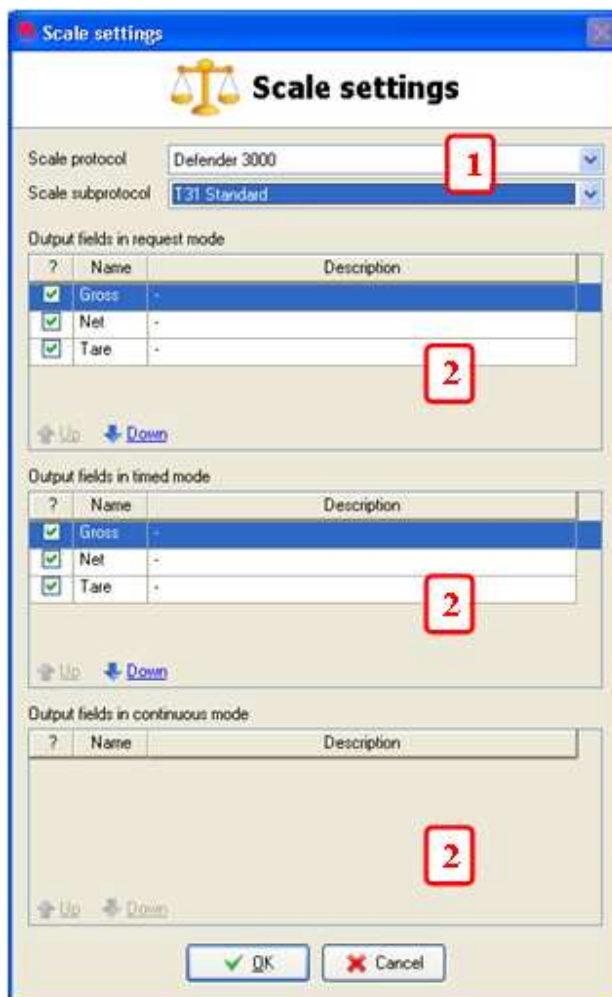
Configuration

Connected Balance

The balance which is selected in the software is shown on at the left - top of the main window. To change this balance, or modify the list and order of extracted information, click on the [Configure](#) link.




The balance configuration window or « Scale setting » window appears.



To change the protocol of the selected balance, select it from the « Scale Protocol / Sub-Protocol » (zone1). If there is no protocol corresponding to your balance, please contact Ohaus.

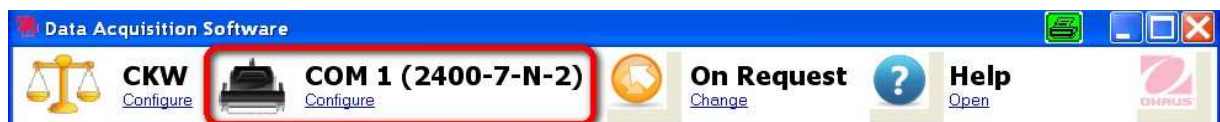
To modify the list of output fields, it is only necessary to click on corresponding lines in the 3 parts of the zone 2: (On Request, Time and Continuous).

 If there is no field on the « Continuous » mode (as per the above screenshot), this means the connected balance cannot support this mode.

To change the displayed order of the fields, just click on the field and modify its position by clicking «[Up](#)» or «[Down](#)»

Serial Port Configuration

The Serial port and its parameters to which the balance is connected is shown at the top of the main window. To modify the serial port or its parameters, click on the link [Configure](#).




The « Serial port settings » window appears.



You can set :

- The serial port number to which the balance is connected.
- The communication speed.
- The number of data bits.

- The parity.
- The number of « Stop bits ».

 The communication speed, the number of bits, the parity and the number of the stop bits selected in the software must correspond exactly to those of the balance settings (Refer to the balance menu). Otherwise, the data is not received or will be misinterpreted


Data Collection Mode

The data collection mode is shown at the top of the main window. It can be changed by clicking on the link [Change](#).



The « Mode selection » window appears.



 If the balance cannot be set to « Continuous », this mode will not be selectable from the «Mode selection» window

Select the required mode :

- On request: The data is collected only on user demand (Via software button or via balance « Print » button).
- Timed: The data is collected every x seconds (x has to be positive and is user-definable)
- Continuous: The data is collected continuously.

General Use

Button descriptions

Read / Pause : Start receiving data / Pause receiving data



These buttons are available only if the « data Collection Mode » is set to « Timed » or « Continuous ».

By clicking on “Read”, the software will start collecting the transmitted data. By clicking on “Pause” the software stops collecting the data.

Save:



The « Save » button saves the contents of the table into an Excel or CVS file. This command is active if the table contains at least one line.



By default, files are saved in the *My Documents* folder. If you want to save the file to another location, this new location will be stored and automatically used for the next backup.

Delete:



The « Delete » button allows the user to clear the contents of a table. This command is active if the table contains at least one line.

Instant Weight :



The « Instant Weight » button requests the weight value on the balance and receives it instantaneously (whether stable or not). This command is available only if the balance is able to answer the command.

Stable Weight :



The « Stable Weight » button requests the weight value on the balance and receives the next stable weight. This command is available only if the balance is able to answer to the command.

Restoring data if software stops working

In the case of an unexpected closure of the software (following a power failure, a Windows problem or a software problem), the data received and stored in the table is not lost. It will be reloaded automatically the next time you launch the application.

Message List

Generic Messages

Message	Explanation
<p><u>Title</u> Start application failed</p> <p><u>Message</u> D.A.S. application is already running.</p>	<p><u>Explanation</u> The application cannot be launched twice on the same computer.</p> <p><u>Action</u> Make sure the application has not been already launched.</p>
<p><u>Title</u> Communication problem</p> <p><u>Message</u> Start scale failed. Check your parameters.</p>	<p><u>Explanation</u> The application cannot establish communication with the balance.</p> <p><u>Action</u> Check the connection of the balance with the computer and the communication parameters (speed, data bits, ...)</p>

Main Window Messages

Message	Explanation
<p><u>Title</u> There is no balance defined</p> <p><u>Message</u> Choose the balance you are connected to.</p>	<p><u>Explanation</u> This may be the first time the application has been launched and no balance has been defined yet.</p> <p><u>Action</u> Select the protocol corresponding to your balance in the “Scale Settings” window.</p>
<p><u>Title</u> Default serial port settings</p> <p><u>Message</u> Do you want to apply default serial port setting of the selected protocol?</p>	<p><u>Explanation</u> Choose a new balance protocol</p> <p><u>Action</u> If you wish, you can apply the default settings defined in the chosen protocol. These settings include the communication speed, the number of data bits, parity and number of stop bits.</p>
<p><u>Title</u> No serial port defined</p> <p><u>Message</u> Choose the serial port the scale is connected to</p>	<p><u>Explanation</u> This may be the first time the application has been launched. After having selected the balance protocol, you must choose the serial port and configure it.</p> <p><u>Action</u> Select the serial port number in the serial port settings window.</p>

<p><u>Title</u> Data successfully saved.</p> <p><u>Message</u> Do you want to clear the received data</p>	<p><u>Explanation</u> After saving data, the software offers to automatically clear the chart.</p>
<p><u>Title</u> Delete confirmation.</p> <p><u>Message</u> Are you sure to want to clear received data ?</p>	<p><u>Explanation</u> Simple confirmation to avoid clearing received data.</p>
<p><u>Title</u> Maximum number of lines reached</p> <p><u>Message</u> You have reached the maximum number of lines limit (...) No more data will be received.</p>	<p><u>Explanation</u> For technical reasons, the number of rows of the table is limited. This message appears when the limit is reached.</p> <p><u>Action</u> To receive new data, you must clear the table.</p>
<p><u>Title</u> Close confirmation</p> <p><u>Message</u> There is unsaved received data. Are you sure you want to close D.A.S. ?</p>	<p><u>Explanation</u> The table contains data not saved when you try to exit the software. This warns you to avoid losing data.</p>

« Scale Settings » window messages

Message	Explication
<p><u>Title</u> Incorrect selection</p> <p><u>Message</u> You have to select at least one field of the data.</p>	<p><u>Explanation</u> Whatever the chosen protocol, you must select at least one field of received data.</p>